

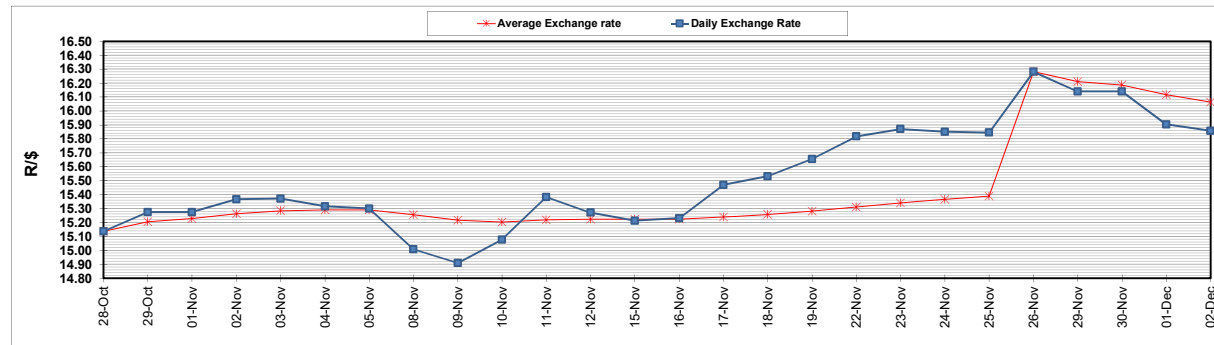
	PETROL 95 ULP	PETROL 93 ULP & LRP	DIESEL 0.05%	DIESEL 0.005%	ILL. PAR.
GAUTENG PUMP PRICE (SA c/l) AS FROM 01/12/2021	2,029.000	2,007.000	-	-	-
WHOLESALE PRICE (SA c/l) AS FROM 01/12/2021	-	-	1,792.480	1,797.880	1,167.688
SINGLE NATIONAL MAXIMUM RETAIL PRICE	-	-	-	-	1,489.000
BASIC FUEL PRICE - 02/12/2021 (SA c/l)	835.223	820.227	831.827	836.096	826.539
PRESS RELEASE CONTRIBUTION TO BFP 01/12/2021 - 02/12/2021 (SA c/l)	973.670	961.670	955.630	961.030	946.128
UNIT OVER/(UNDER) RECOVERY - 02/12/2021 (SA c/l)	138.447	141.443	123.803	124.934	119.589
AVERAGE BASIC FUEL PRICE 26/11/2021 - 02/12/2021	863.199	847.187	852.216	858.015	845.677
AVERAGE UNIT OVER/(UNDER) RECOVERY 26/11/2021 - 02/12/2021	88.535	92.546	80.614	79.015	80.051

ANALYSIS MOVEMENT OF AVERAGE OVER/(UNDER) RECOVERY

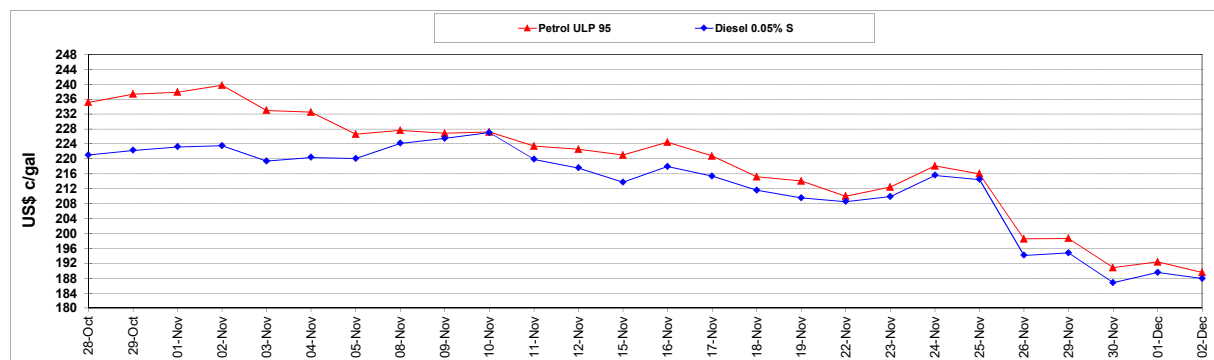
	PETROL 95	PETROL 93	DIESEL 0.05%	DIESEL 0.005%	ILL. PAR.
- MOVEMENT IN INTERNATIONAL PRODUCT PRICES	124.832	128.170	116.449	115.094	115.611
- MOVEMENT IN EXCHANGE RATE	(36.297)	(35.623)	(35.835)	(36.079)	(35.560)
AVERAGE UNIT OVER/(UNDER) RECOVERY 26/11/2021 - 02/12/2021	88.535	92.546	80.614	79.015	80.051

R/\$ EXCHANGE RATE - (R/\$15.8585 - 02/12/2021)

EXCHANGE RATE USED IN BASIC FUEL PRICE



INTERNATIONAL PRODUCT PRICES OF BASKET USED IN BASIC FUEL PRICE



BASIC FUEL PRICE IN SA CENTS PER LITRE

